



ADA

Atap Design
Awards 25/26

ADA Student Icons

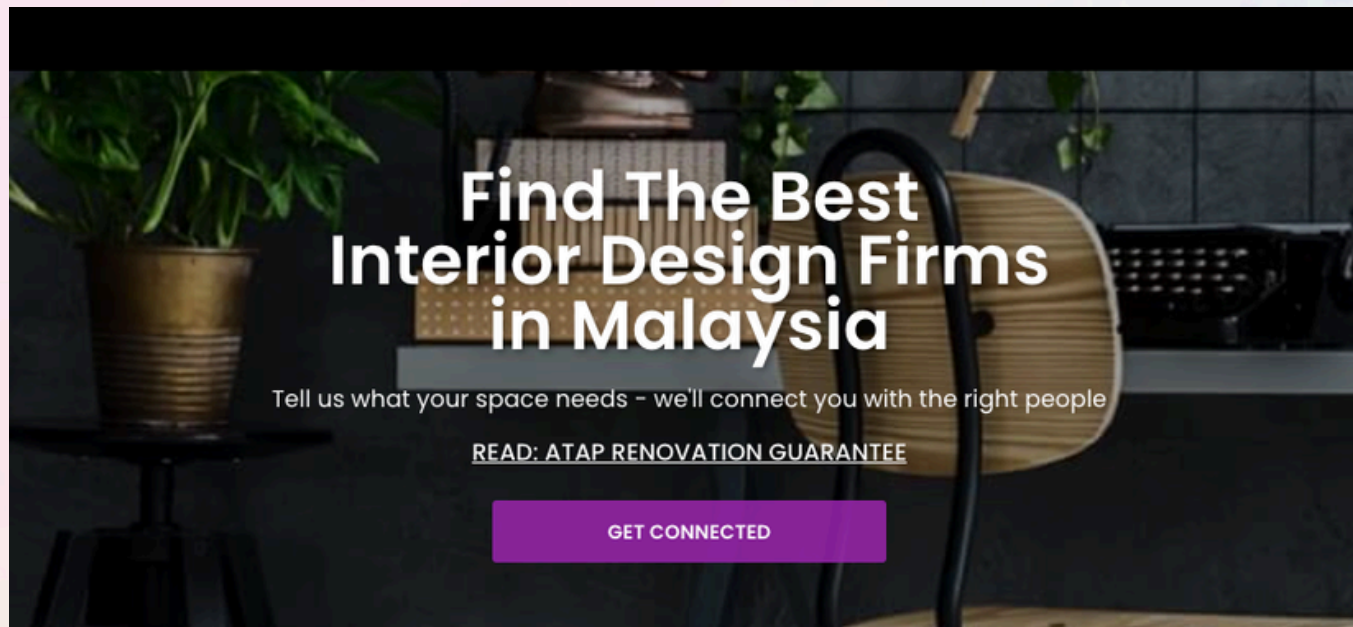
**CELEBRATING THE EMERGING
GENERATION OF *design talents***

 **atap**

WEB:

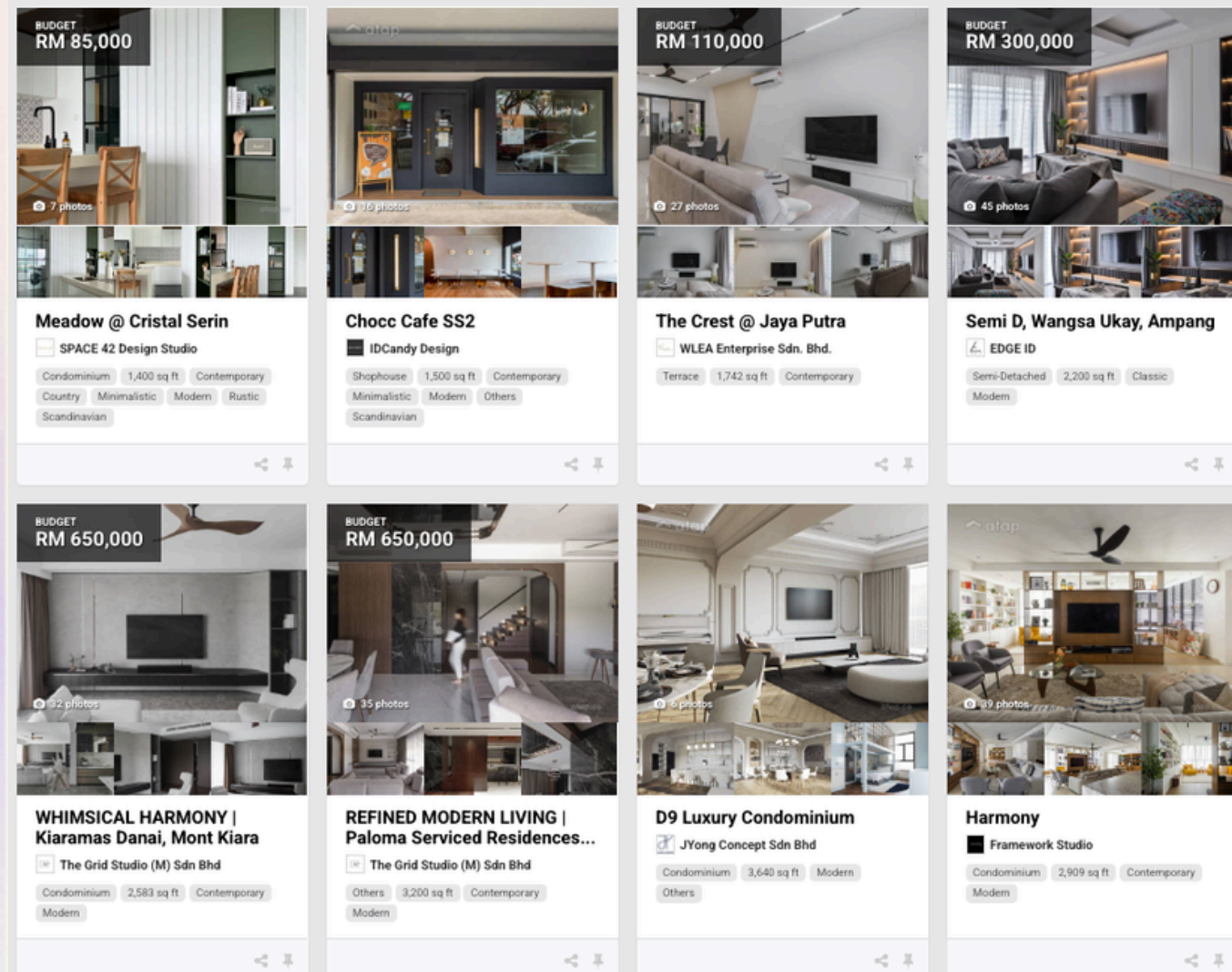
atap.co

design-awards.atap.co



SOME OF OUR FAVOURITE INTERIOR DESIGNS

Discover beautiful and functional designs by our local interior designers



who
IS atap

Atap.co connects property owners to trusted interior designers across Malaysia. Our platform allows property owners to view the profiles and portfolios of verified interior designer firms, provides educational and inspirational content on interior design and renovation, and ultimately connects property owners looking to renovate to an interior design firm of their choosing or a few recommended by us.



ATAP DESIGN AWARDS (ADA) & ADA STUDENT ICONS

The Atap Design Awards (ADA) celebrates global excellence in interior design and architecture, spotlighting both seasoned professionals and rising stars. Through meticulous selection, we honour individuals and spaces, recognizing the profound impact of design on our environments.

ADA Student Icons (ADASI) is a prestigious competition under ADA that highlights the creativity, innovation, and vision of emerging young designers in Malaysia. Open to undergraduate students and recent graduates in design-related fields, ADASI offers a unique platform for the next generation to showcase their talent on a national stage.

Whether you're studying interior design, architecture, or any related discipline, this is your chance to get noticed, gain industry recognition, and join a passionate design community. **ADASI isn't just about awards — it's about expressing yourself, pushing creative boundaries, and stepping into the spotlight as one of Malaysia's next-generation design icons.**



COMPETITION *theme*

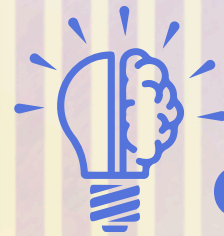
Human-Centered Design: Spaces for Well-Being

- This year's theme challenges students to design environments that enhance comfort, inclusivity, and overall well-being. The goal is to create spaces that promote relaxation, encourage meaningful connections, and cultivate a strong sense of belonging. Students are encouraged to explore how thoughtful design can positively impact emotions, interactions, and daily experiences. We are thrilled to announce [CLV Glasstech](#) as our official brand partner for this year's competition.



why join

ADA STUDENT ICONS ?



CREATIVE EXPLORATION

Encourage creative exploration, pushing boundaries, and unleashing artistic vision while optimizing efficiency.



COLLABORATIVE LEARNING

Collaborate with peers and professionals to exchange ideas, fostering personal and professional growth.



NETWORKING & EXPOSURE

Connect with influential figures, potential employers to expand your professional network.



RECOGNITION & PRESTIGE

Receive recognition, elevate your portfolio, and enhance your reputation for future career opportunities.



EMBRACING TRENDS

Experiment with cutting-edge concepts and materials to keep your designs fresh and evolving the design world.



DesignVoyage Field Trips



Project Showcase



Career Placement Opportunities



Industry Event Passes

other **BENEFITS**

Beyond the cash prize, participants in ADA Student Icons 2025/2026 stand to gain a myriad of other advantages.



ADA Student Icons 2024 Winners

cash PRIZES

01

Platinum Winner
RM 3,000

02

Gold Winner
RM 2,000

03

Silver Winner
RM 1,000

important
KEYDATES

EXTENDED

01

SUBMISSION DEADLINE

30th May 2026

02

SHORTLIST ANNOUNCEMENT

8th June 2026

NEW DATE

03

JUDGING ROUND & FINALIST PRESENTATION

18th June 2026

04

AWARD PRESENTATION

21st November 2026

Panel of **JUDGES**



MIKI EE

LONGFACE DESIGN



IDR. ALEX LOO

S.O.D CONCEPT STUDIO



KASHFI EMIR

STUDIO THREE



MICHAEL TEOH

ZT STUDIO



Judges discussion at ADA Student Icons 2024

judging CRITERIA

25%
Design Vision
& Concept

25%
Aesthetic
Quality

20%
Functionality
& Practically

20%
Innovation
& Originality

10%
Environmental
Sustainability

5%
CLV Material
Integration



GLASSTECH

INTERGRATION

[The CLV Design Challenge](#)

This year, the integration of CLV materials is a mandatory requirement. Students must move beyond simple decoration and explore glass and mirrors as primary architectural elements that influence light, privacy, and spatial perception.

Key Integration Guidelines

To qualify for the CLV Material Integration (5%) judging criteria, your design should focus on:

- **Large-Format Applications:** Use CLV products to define spaces rather than as small-scale accessories.
- **Spatial Purpose:** Incorporate materials as doors, sliding panels, wall partitions, or semi-transparent enclosures.
- **Well-Being Impact:** Demonstrate how your material choice contributes to comfort, calmness, or enhanced human interaction.
- **Innovative Layering:** Explore transparency levels, panel compositions, and how glass interacts with other textures in the environment.

Preferred Material Applications

Students are encouraged to use CLV products in the following ways:

- **Structural Elements:** Floor-to-ceiling glass wall panels or spatial dividers.
- **Functional Openings:** Innovative glass doors or sliding panel systems.
- **Architectural Art:** Standalone glass or mirror pieces that function as spatial landmarks.
- **Atmospheric Tools:** Mirrors strategically placed to manipulate light flow and create a sense of openness.

See Past Student Work [HERE](#)

<https://clvglasstech.com.my>

submission REQUIREMENT



1. Each student is allowed to submit only **one (1) entry**.
2. All participants must submit their entry via **Google Form** under the category **ADA Student Icons 2025/2026**.
3. On the submission page, upload a **maximum of four (4) A1-sized presentation posters** (PDF format, minimum 300 dpi resolution). The file size must not exceed 20MB.
4. Submitted work must be in **portrait orientation** (landscape orientation is not allowed).
5. All participants must submit a **project or work description**. Entries with missing or insufficient descriptions will be automatically disqualified.
6. All entries must be fully completed and submitted through the **Google Form** by **30 May 2026, 11:59 PM**. Late submissions will not be considered.

Thank you

Submit your work here!



<https://atapdot.co/ADASI2025>

**Contact us at
support@atap.co**



ADA

Atap Design
Awards 25/26

ADA Student Icons

BRAND PARTNER



GLASSTECH

BRAND SPONSORS

